

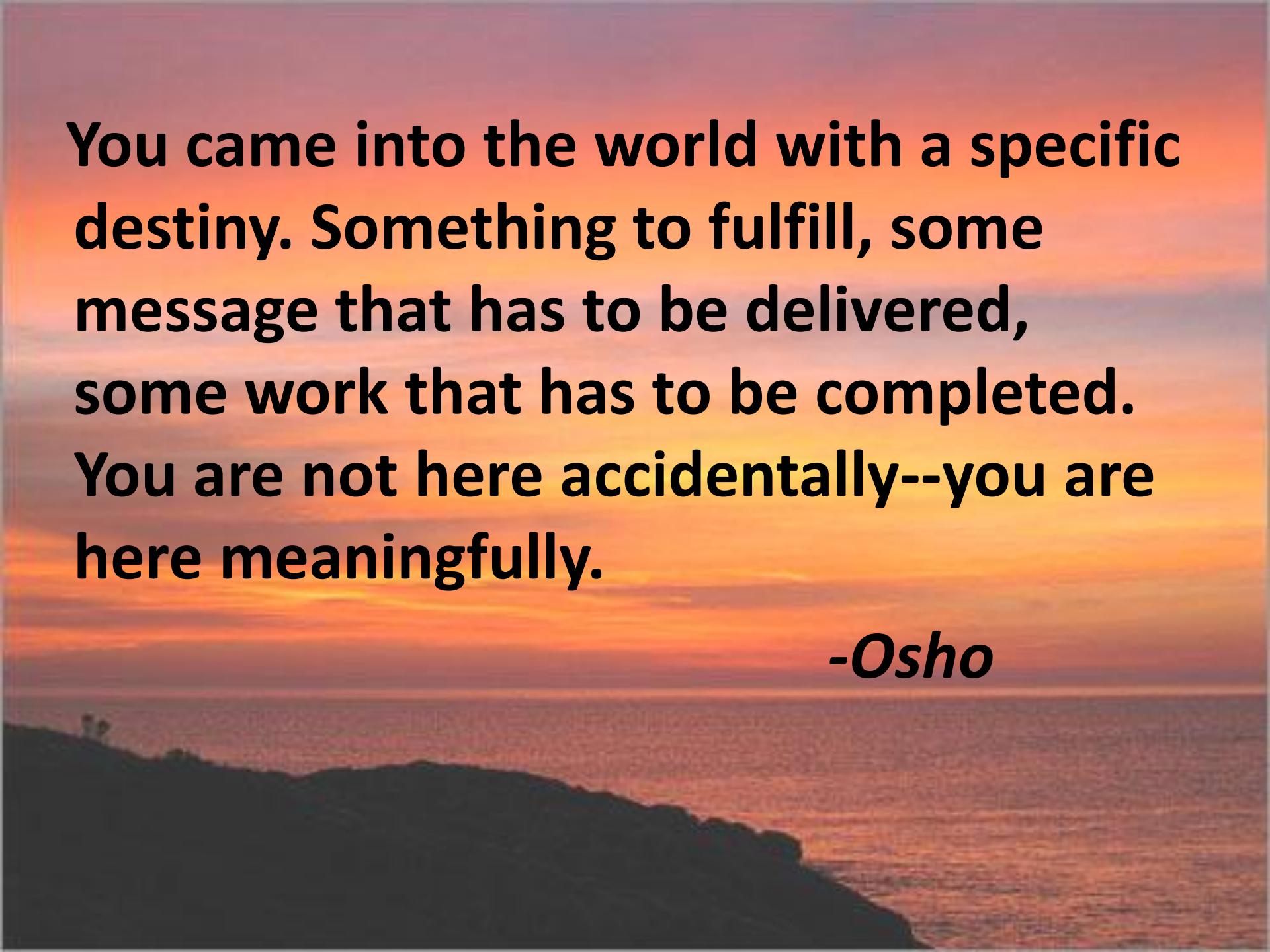
Anne Tolch

Vice President of the Sustainability Alliance of Southern California

California Lung Association Leadership Board Member

Navy League Coronado Council Director

20 Slides

A sunset over the ocean with a dark silhouette of a coastline in the foreground. The sky is filled with warm, orange and yellow hues, transitioning to a darker purple at the top. The ocean is visible in the lower half, reflecting the colors of the sky. The foreground shows a dark, silhouetted landmass.

You came into the world with a specific destiny. Something to fulfill, some message that has to be delivered, some work that has to be completed. You are not here accidentally--you are here meaningfully.

-Osho



CO₂

Uniting
for
Climate Action

Atmospheric CO₂

August 1958 - August 2011

August CO₂ | Year Over Year | Mauna Loa Observatory
Data: Scripps (1958 - 1974) + NOAA-ESRL (1974-Present)

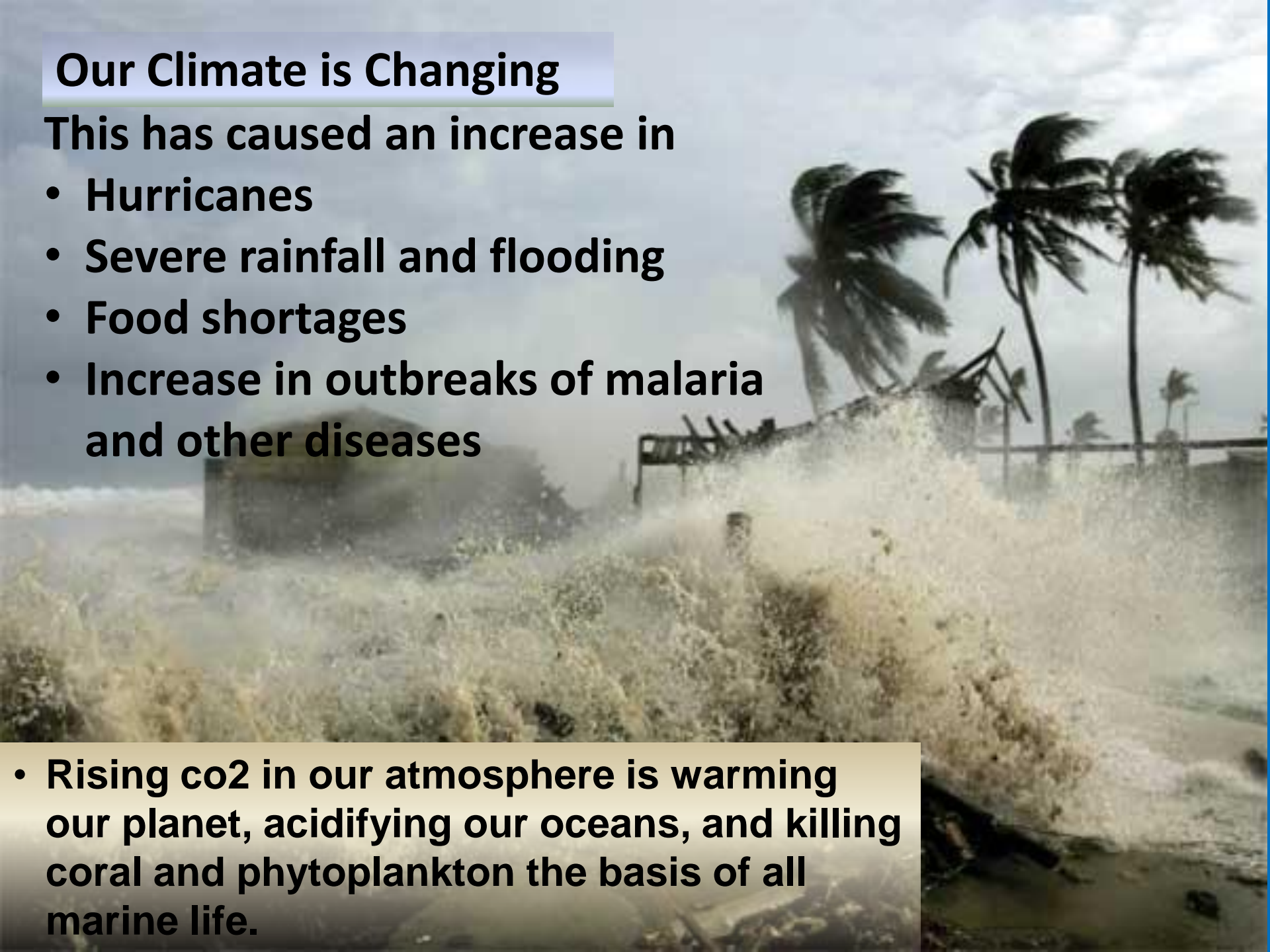


Our Climate is Changing

This has caused an increase in

- Hurricanes**
- Severe rainfall and flooding**
- Food shortages**
- Increase in outbreaks of malaria and other diseases**

- Rising CO_2 in our atmosphere is warming our planet, acidifying our oceans, and killing coral and phytoplankton the basis of all marine life.**





Our Future is in Jeopardy

US emissions

- **1/3 from smokestacks**
- **1/3 from tailpipes**
- **1/3 from buildings**

**San Diego Emissions
46% from Transportation**

TRACKING THE HEAT WAVE

TOMORROW

MASSIVE UPPER-LEVEL
RIDGE HOLDS ON

H

AREA OF WIDESPREAD
90s & 100s, HUMID

The
Weather
Channel
weather.com

Water emergencies due to shortages in reservoirs,
streams and wells

Widespread crop and pasture losses

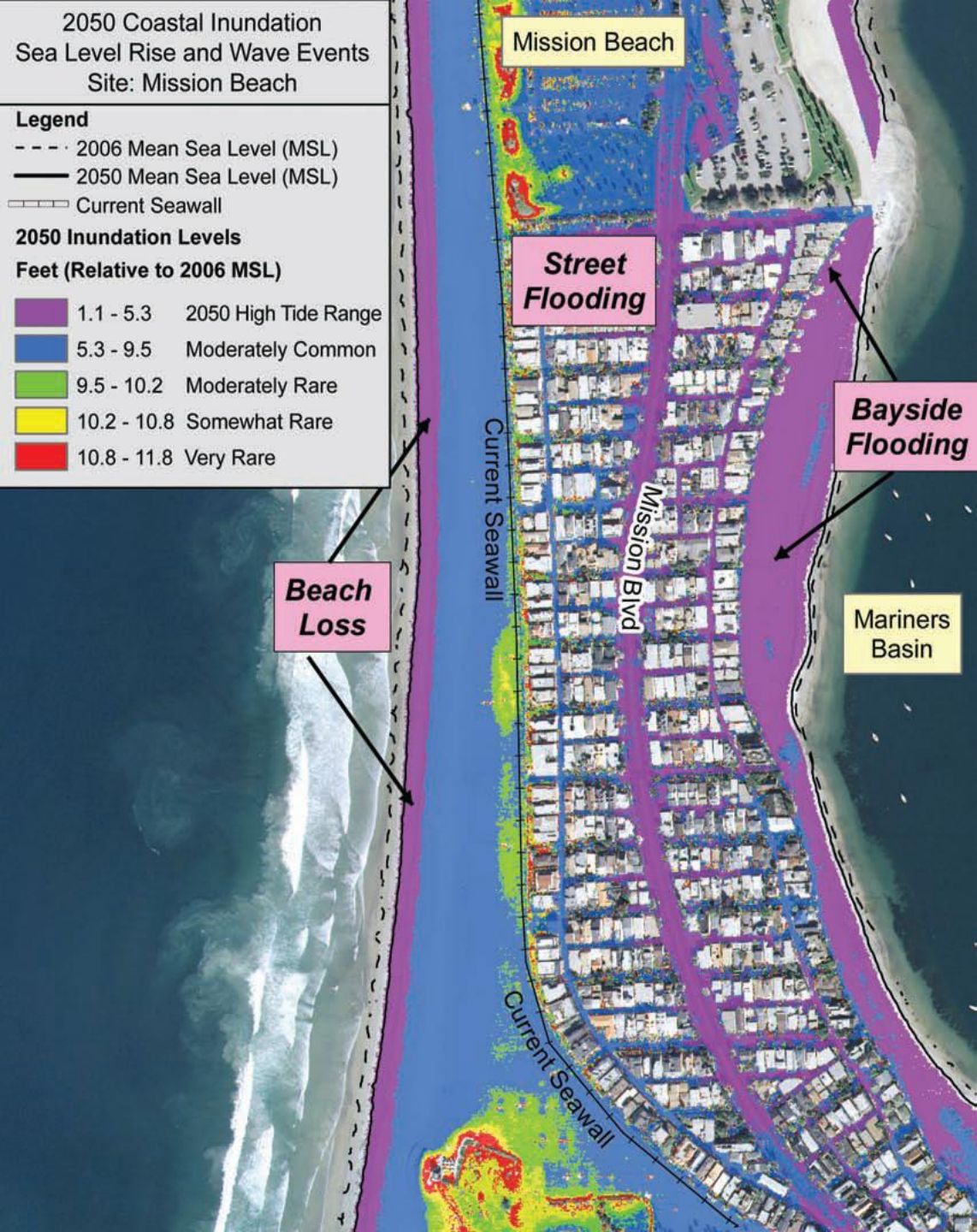
2050 Coastal Inundation
Sea Level Rise and Wave Events
Site: Mission Beach

Legend

- - - 2006 Mean Sea Level (MSL)
- 2050 Mean Sea Level (MSL)
- Current Seawall

2050 Inundation Levels
Feet (Relative to 2006 MSL)

1.1 - 5.3	2050 High Tide Range
5.3 - 9.5	Moderately Common
9.5 - 10.2	Moderately Rare
10.2 - 10.8	Somewhat Rare
10.8 - 11.8	Very Rare

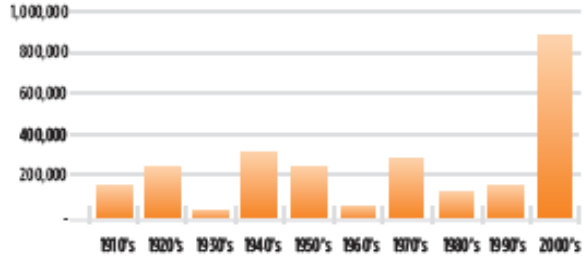


What does this mean for San Diego?

If trends continue, by 2050 Mission Beach and other low-lying Beach areas will be flooded. High tides alone (purple) are expected to flood parts of the sandy beach and bayside streets.

San Diego

Total Acres Burned by Wildfires in San Diego County by Decade



In the last ten years, the area burned by wildfires was unprecedented. In 2003 and 2007, wildfires burned nearly 740,000 acres across San Diego County.



Why Haven't We Won?

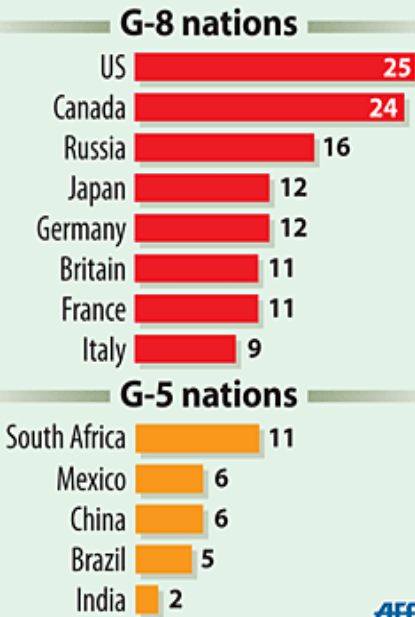
- Many organizations and efforts with different messages. This fragmented the call to action.
- Technical language rather than stories of impact to people and animals
- Did not engage American intellect and emotion
- Oil and Coal interests working in opposition
 - Spreading misinformation
 - Funding campaigns, lobbying Congressional Members
 - \$30M to think tanks to discredit the science.

What Must Happen Next

Greenhouse gas emissions/capita

Tons of CO₂ equivalent per capita over 1 year

Data for 2008-09



AFP

SOURCE: WWF/Allianz

- U.S. must commit to substantial reductions in Co2 emissions.
- Their leadership will put international pressure on China and India to follow suit
- Narrow window to enact legislation and begin implementing on the ground reductions.

How We Win

- **Harmonize call to action.**
- **Elect candidates who will fight against climate change.**
- **Bring it to the media and political forefront.**
 - Make climate change a focal point of the 2012 presidential race.
- **Couple climate change education with entertainment. Concerts, events etc.**

What You Can Do

- 1) Sign the pledge
- 2) Join worldwide rally September 24
- 3) Elect candidates who are committed to climate change action.
- 4) Talk with your friends and family

Sign the Pledge

I'll do my part.

Elected representatives – do yours!

We can prevent the worst climate change impacts, but only if we all do our part – individuals, businesses *and* elected representatives. My pledges are below. I will vote only for candidates who commit to doing their part.

My Pledge (personal/business) – I will:

Elected representatives' responsibilities:

- Drive less and bike, walk or take public transit.** 41% of SD County's greenhouse gas emissions are from cars and light trucks.
- Eat less meat.** Worldwide, the livestock industry produces 18% of emissions, more than transportation.
- Use less (and cooler) water.** 20% of California's energy goes to transport, treat and heat water.
- Support businesses that operate sustainably.**
- Vote for action.** I will vote only for candidates who commit to real action on climate change.

- **Move the region forward.** Ensure the 40-year Regional Transportation Plan (to be approved in October) reduces carbon emissions to meet CA goals.
- **Fund public transit and bicycle transportation,** rather than more roads.
- **Put a price on carbon emissions.**
- **Invest locally in clean energy and clean energy jobs.**
- **Support the US signing international treaties** to bring carbon dioxide back down to 350 ppm.

Name (or business): _____ Email: _____

Address, City, State, Zip: _____ Phone: _____

Comments: _____

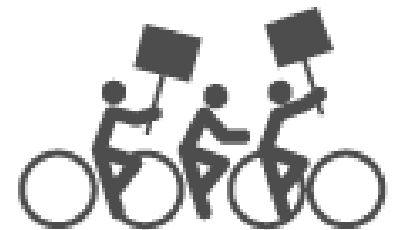
Please keep me informed about climate actions in San Diego (your information will not be sold to any third party)

EarthKeeping Interfaith Discussion

- An Interfaith Panel with representatives from various faith traditions will discuss their beliefs in terms of caring for and protecting Creation, especially in light of the climate crisis. We'll also look at being translated into practical action for a more ethical and sustainable world.
- **St. Paul's Cathedral (Guild Room), 2728 Sixth Avenue, San Diego, CA 92103**
- **10:00 – 11:00am, September 24**

March & Rally in Balboa Park

- March about 1.2 miles on sidewalks, with banners, drums & puppets - culminating with a rally on the lawn by the Sports Museum.
- Gather on the East (Balboa Park) side of Sixth Avenue between Laurel and Juniper
- Speakers include Congressman Bob Filner, Marshall Saunders, Bill Powers, and other local leaders
- **11:00am – 1:00 pm, September 24**



Supporting Organizations



SIERRA CLUB
FOUNDED 1892

Earth Keepers San Diego
Many Faiths One Planet



Center for Sustainable Energy[®]
CALIFORNIA

SASC
Sustainability Alliance
of Southern California

GREENPEACE

WILDCOAST
COSTASALVAJE

San Diego County
DEMOCRATIC PARTY

ENVIRONMENTAL HEALTH COALITION

Move SD

San Diego Chapter

GREEN PARTY
of San Diego County

AMERICAN LUNG ASSOCIATION
IN CALIFORNIA



California Interfaith Power & Light

DEMOCRACY FOR AMERICA



CITIZENS CLIMATE LOBBY
Political Will for a Livable World



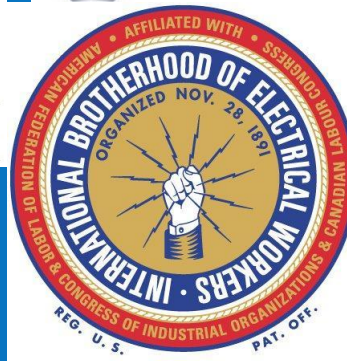
SURFRIDER FOUNDATION
SAN DIEGO COUNTY CHAPTER

San Diego County Bicycle Coalition

Simpler Living
A MINISTRY OF ST. PAUL'S CATHEDRAL

Media Arts
MEDIA ARTS CENTER SAN DIEGO

San Diego Loves Green



Empower San Diego

enviro-business society
advocating :: ecology :: ethics :: economics
www.clube3.org

KOOL Climate Kids
www.kck.110mb.com

Local 569

PDA
PROGRESSIVE DEMOCRATS OF AMERICA



SAN DIEGO COASTKEEPER

More information

www.SanDiego350.org

**...stay tuned for more
on uniting for climate
action**



Made in USA